

Little Dog Harness

A tutorial by Erin Erickson



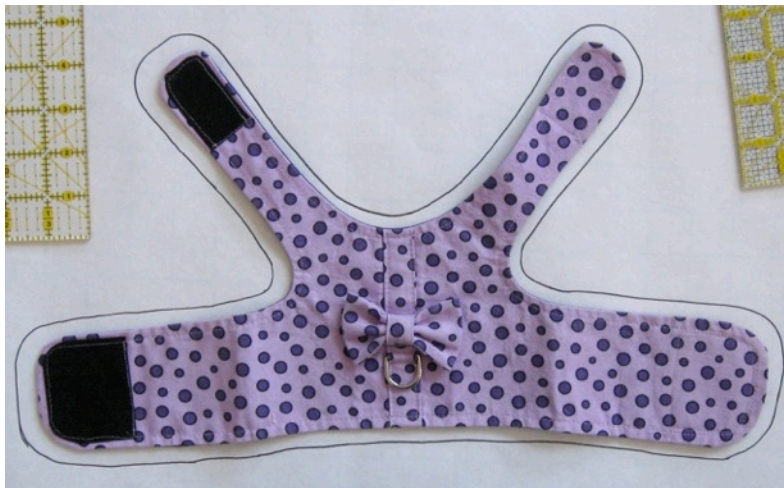
Materials

- For a tiny dog you will need approx. 1/2 yard of fabric
- A D-ring
- 2" wide sew-on hook & loop tape
- Fusible interfacing (I used SF-101)
- Large paper to make a pattern
- 2-sided fusible web (like HeatnBond Lite)

I used a cotton fat quarter for the outside and flannel FQ for the lining. If your dog's chest measurement is less than 17" you should be able to use 2 fat quarters.

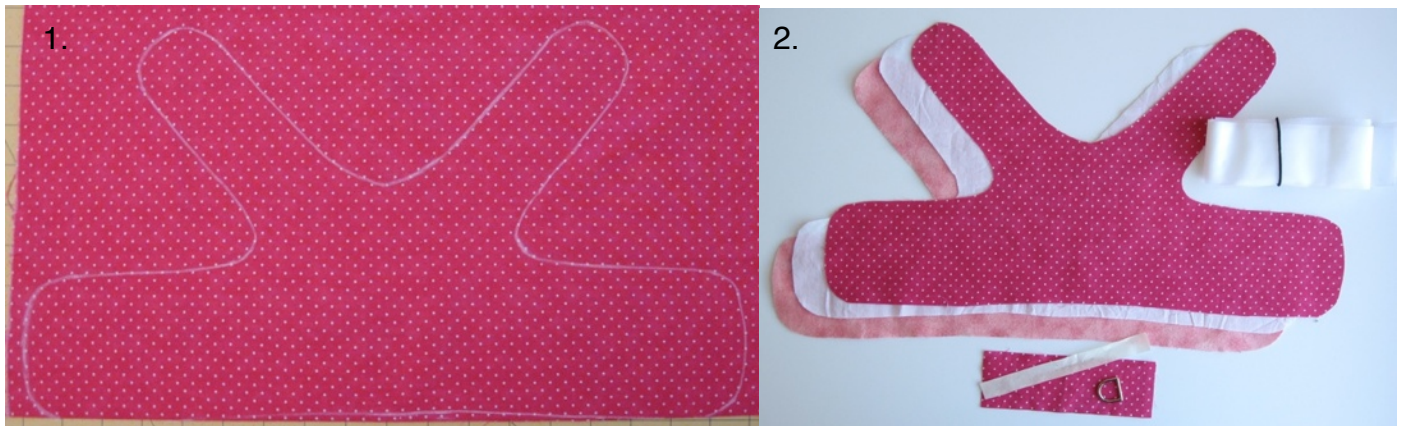
Make a pattern

If you have a harness that fits your dog well, trace around it with your desired seam allowance. I have included two sizes for reference if you need something to start with. Start by measuring your pet's chest measurement, then add 3-4" for overlap and seam allowances. Try using tissue paper to check the fit before you start sewing.



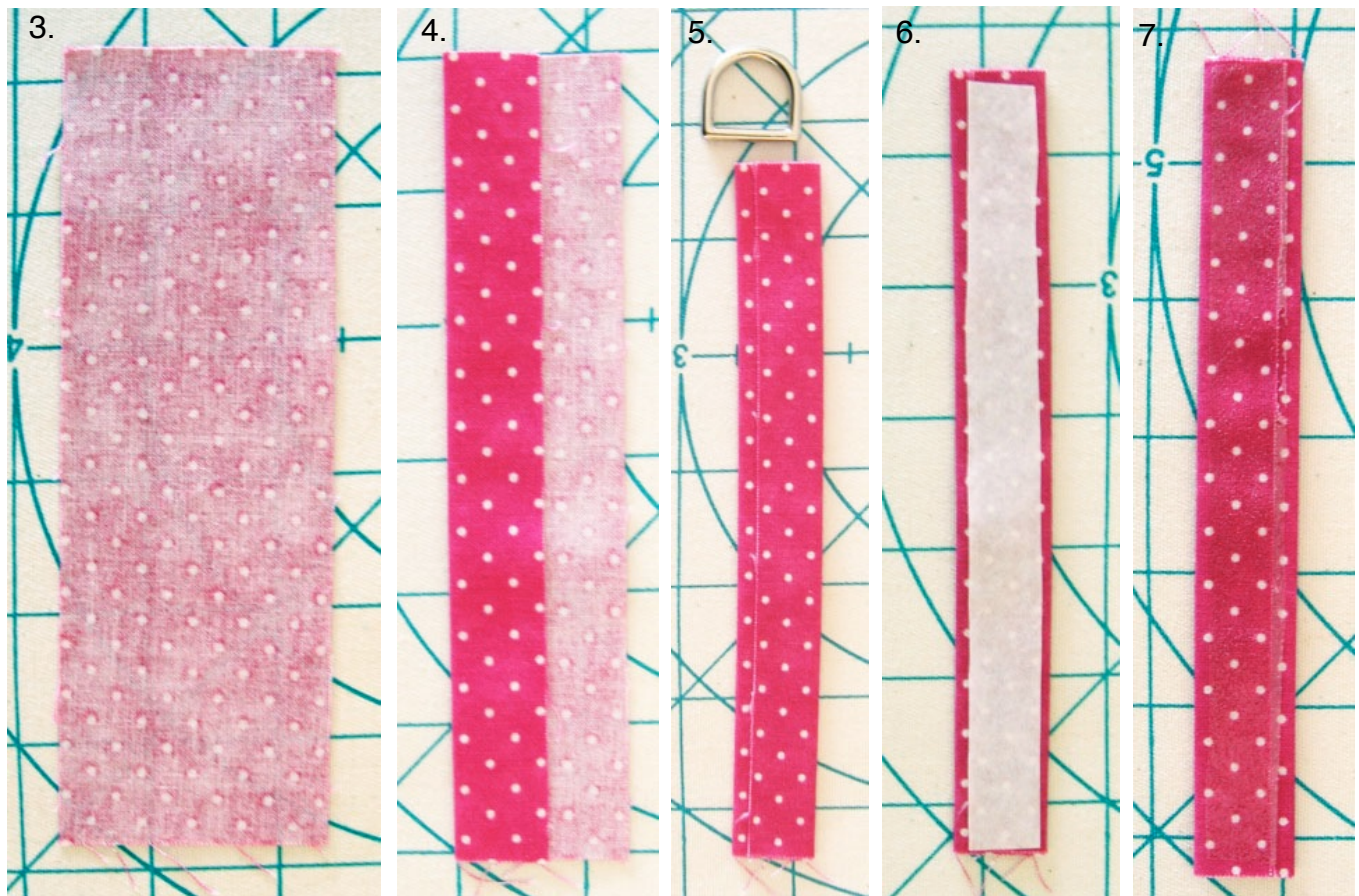
Trace your pattern and cut

1. Trace pattern onto your outside fabric, lining fabric and one layer of fusible interfacing.
2. Cut these out and fuse the interfacing to the outside fabric.



Make center strip

3. Cut one strip of fabric just less than 3 times as wide as the inside of your D-ring and longer than the middle of the harness. (My D-ring was 3/4", so I cut my piece 2" wide.) Cut a strip of fusible web slightly narrower than the width of your D-ring (I cut mine 1/2" wide).
4. Fold just less than one third to the middle.
5. Fold just less than the other third to the middle. Make sure D-ring will fit snugly.
6. Iron strip of fusible web onto the center of the back side of the piece and let cool.
7. Remove paper backing from fusible web.



8. Center strip fusible web side down on harness outside piece. Slide D-ring about 1/3 of the way up the strip and press well with steam on either side of the D-ring.

Sew

1. Using a zipper foot, sew along the edges of the strip as shown. Reinforce the lines of stitching right above and below the D-ring.



2. Place harness pieces right sides together and sew all around, leaving a 4" opening for turning. Clip and notch corners.



3. Turn right sides out and press well, turning the opening under. Slip stitch the opening or topstitch close to the edge.

4. Wrap around your dog to check how far you need to overlap the hook & loop tape.



5. Topstitch and attach hook & loop tape. Sew hook side onto the outside fabric on one side.



6. Sew fuzzy loop side onto the lining, since that side will face your pup.



Tape Together

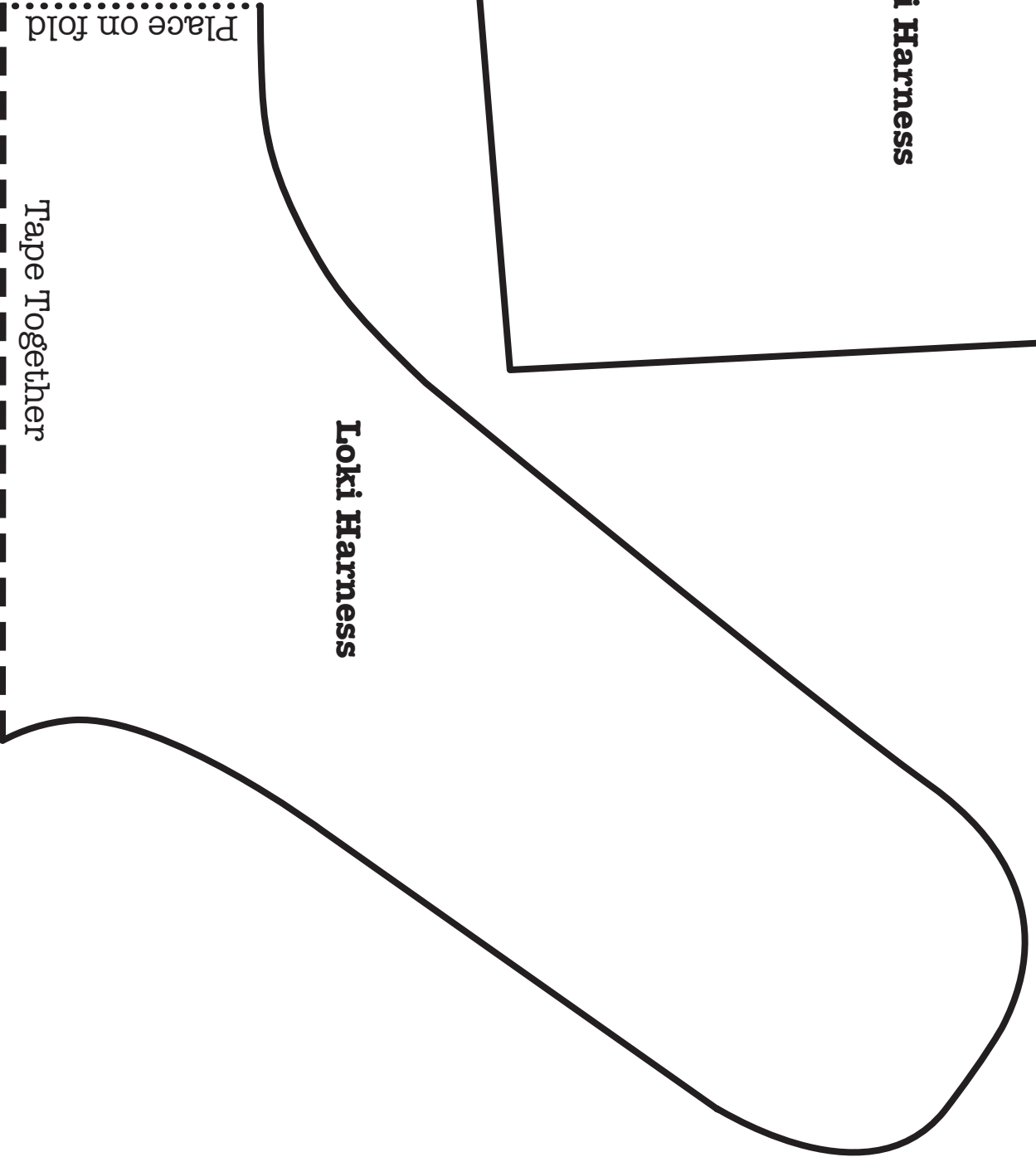
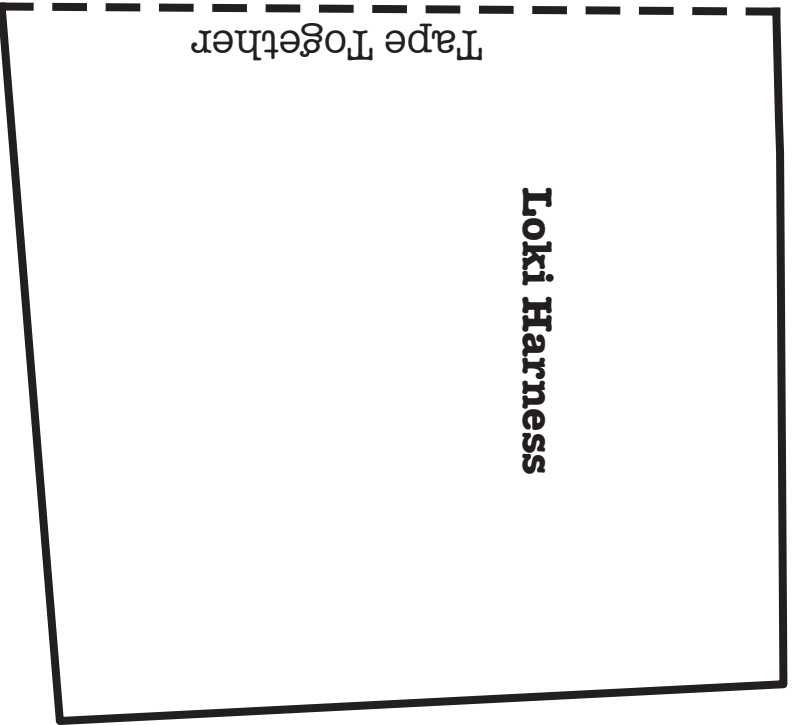
Loki Harness
13 pounds, 17" chest

Tape together
Cut 2 from fabric
Cut 1 from interfacing

Place on fold

Tape Together

Little Dog Harness
Copyright © 2010 - Erin Erickson
Free tutorial for personal use only
<http://www.erinrickson.com>



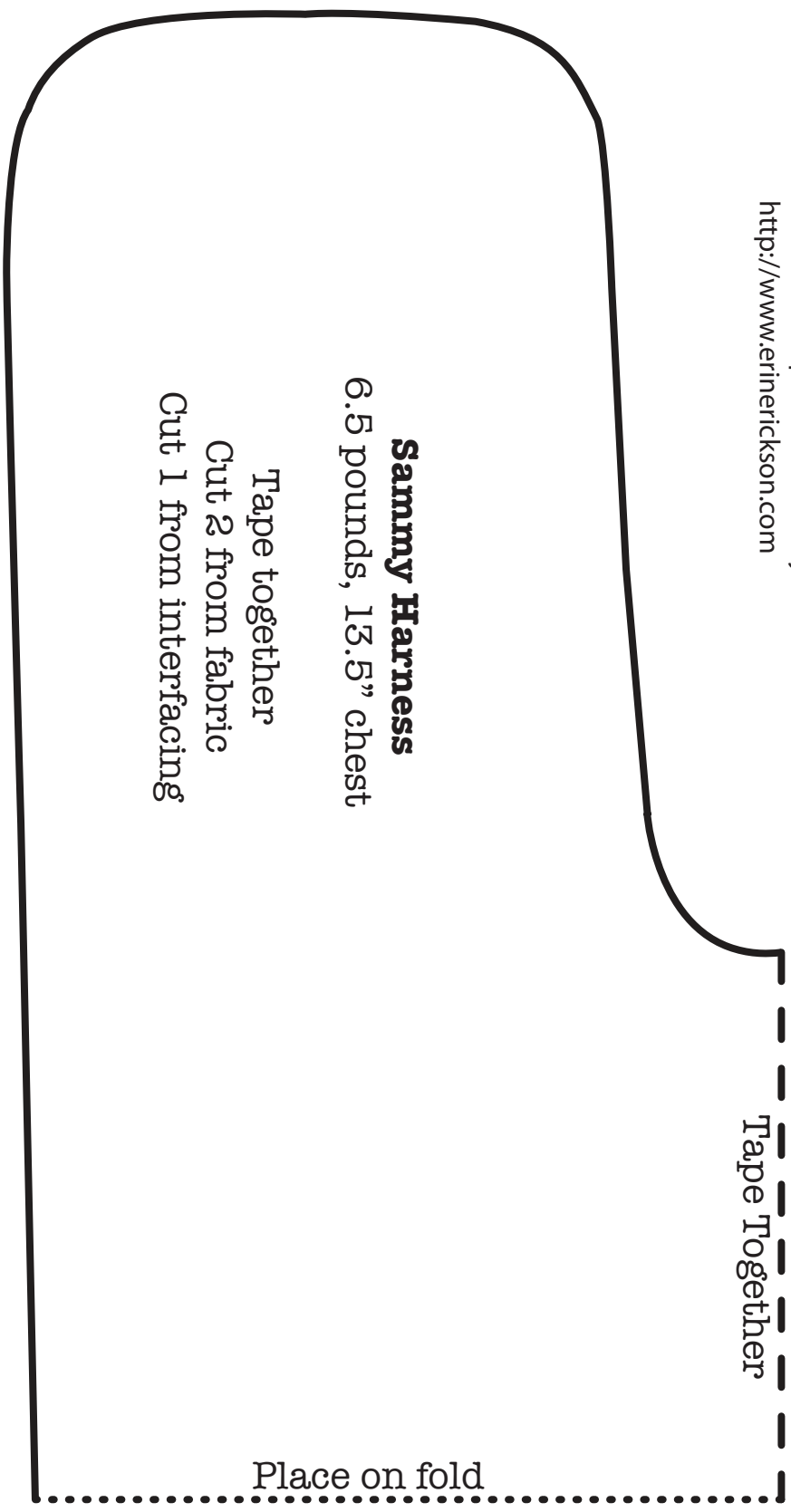
Little Dog Harness
Copyright © 2010 - Erin Erickson
Free tutorial for personal use only
<http://www.erinrickson.com>

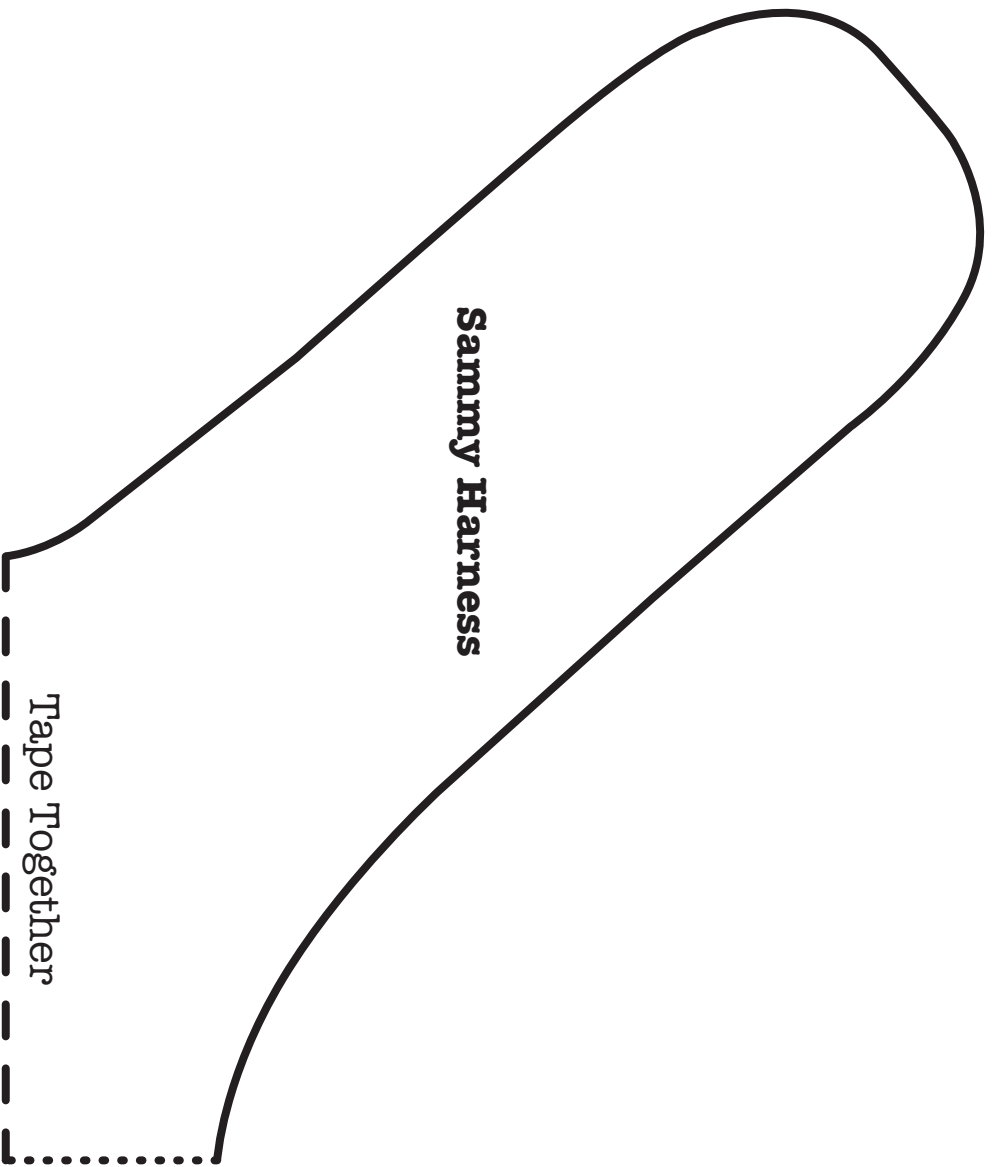
Sammy Harness
6.5 pounds, 13.5" chest

Tape together
Cut 2 from fabric
Cut 1 from interfacing

Tape Together

Place on fold





Sammy Harness

Tape Together